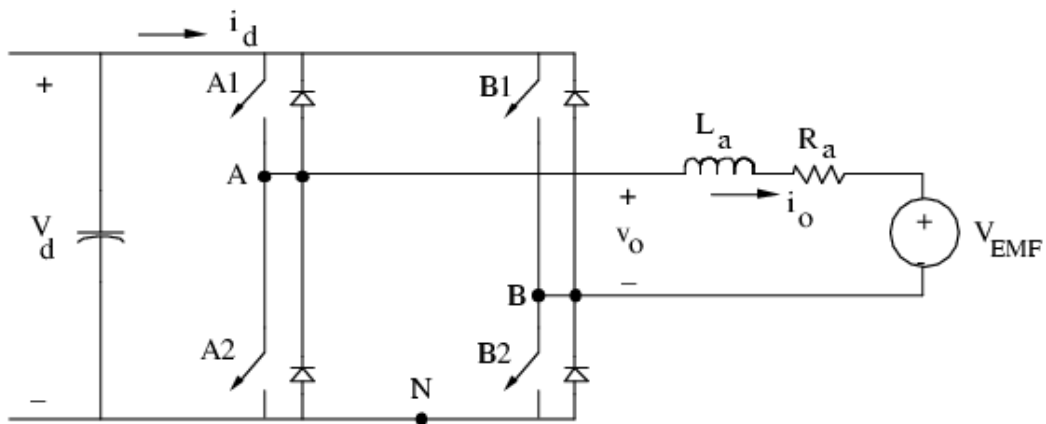


LAB 08

Full-Bridge, Unipolar Switching dc-dc Converter



Nominal Values: Same as that in Example 10 except for unipolar-voltage switchings.

1. Obtain the following waveforms
 - (a) v_{oA} , v_{oB}
 - (b) v_o , i_o
2. Obtain average V_o and compare with analytical expression
3. Obtain peak-to-peak ripple in i_o and compare with analytical expression
4. Obtain average I_d and compare with analytical expression